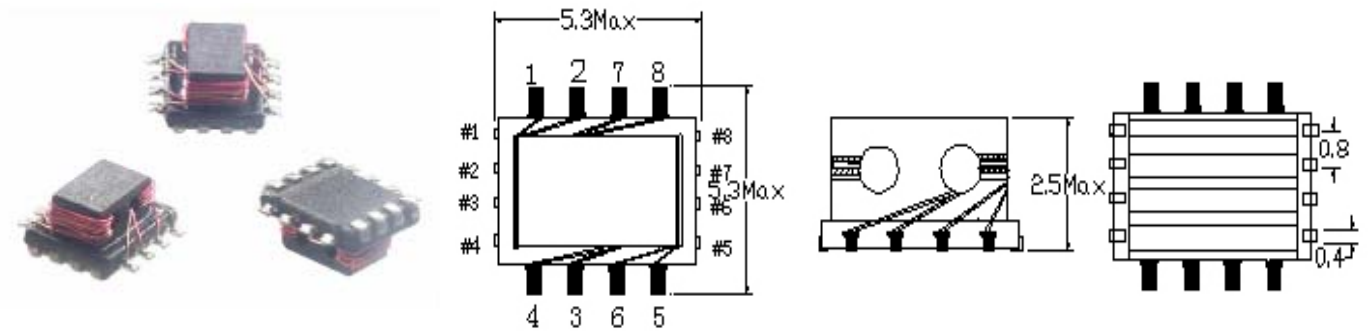


EXTERNAL DIMENSIONS (Unit:m/m)



Part Number	Insertion Loss(HP-8714C)			
	50MHz	100MHz	300MHz	500MHz
SB0402T-03	2.8dB±1.0dB	6.0dB±2.5dB	12.0dB±2.5dB	14.0dB±3.0 dB

Part Number	I DC (Max)	R DC (Max)	Impedance	Rated	Wistanding	Insulation
			Common mode (HP-4291B)	Voltage	Voltage (CH-901)	Resistance (CH-702A)
SB0402T-03		0.12Ω	220 Ω @ 100MHz 500 Ω @ 400MHz		DC 50V	

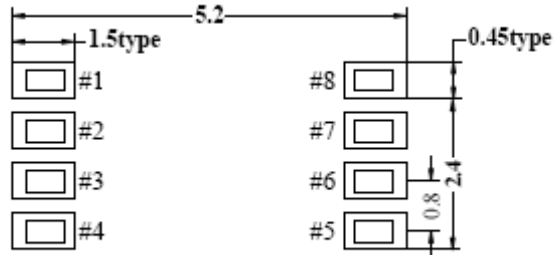
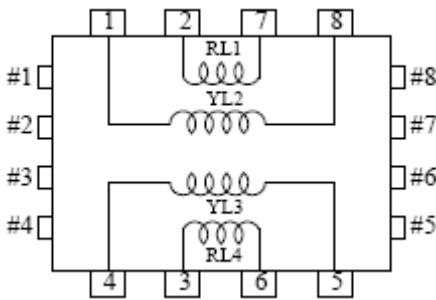
Features:

- Low profile: 2.5mm(Max).
- Common mode impedance of 220Ω at 100MHz ,500Ω at 400MHz.
- Operating temperature Range: -25°C ~ +85°C.
- Suitable for reflow soldering.

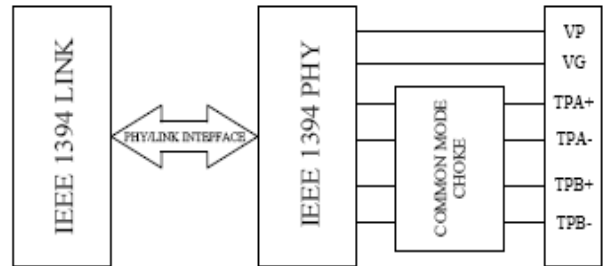
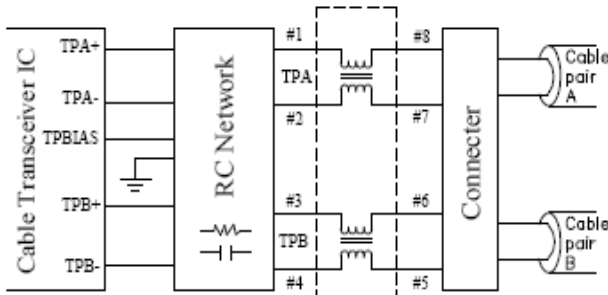
Applications:

SB0402 Series is a dual wound common mode choke w/c is ideal for NOISE ATTENUATION in a twisted pair cable interfaces as well as IEEE1394 & USB2.0 applications. An excellent impedance balance between two sets of twisted pairs is achieved by winding across a single core . One SB0402 common mode choke coil per interface port is possible with this dual winding configurations.

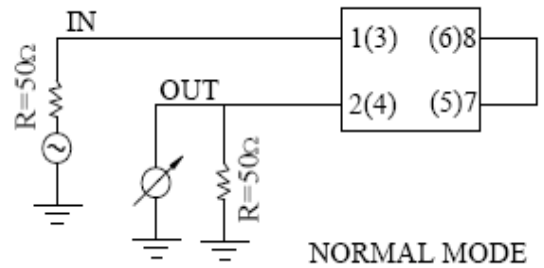
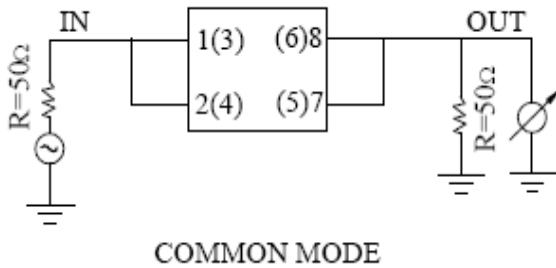
Circuit(Top View)&PAD:



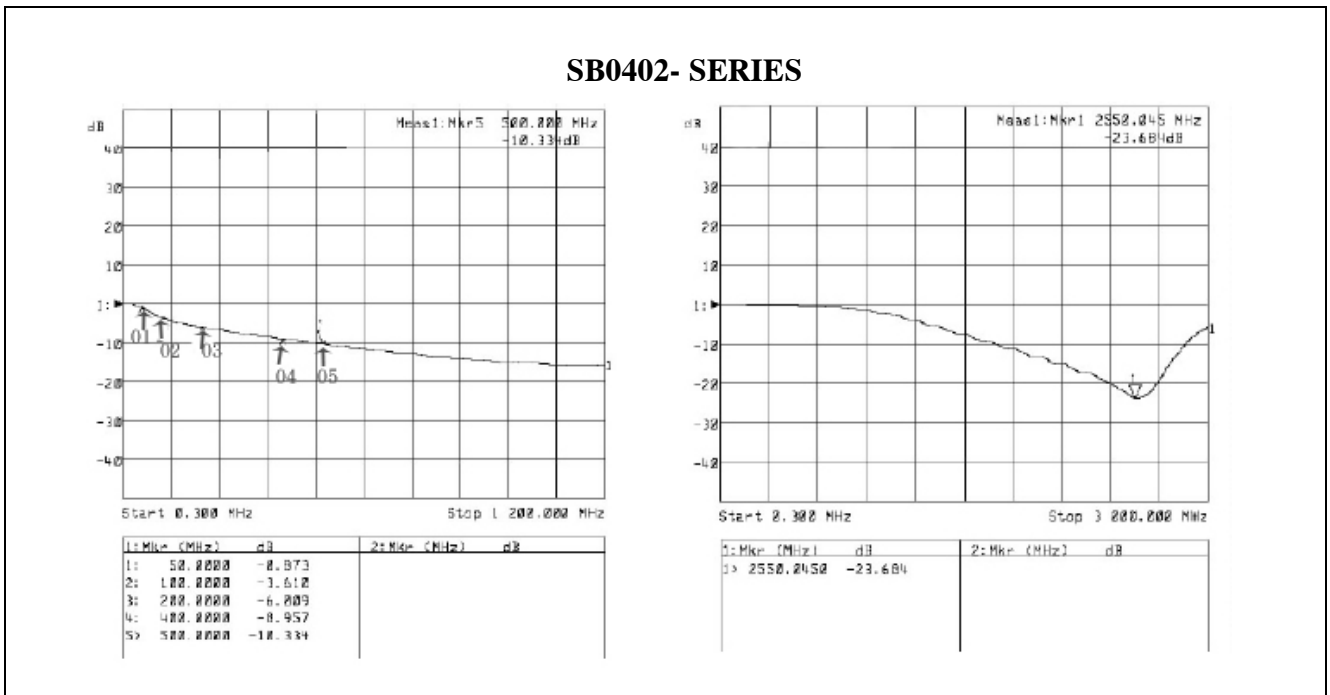
Twisted Cable Interface&IEEE 1394 Port:



Test Mode:



Insertion Loss:



|Z|-F:

