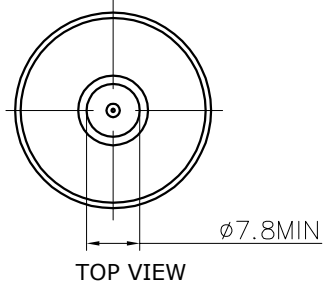
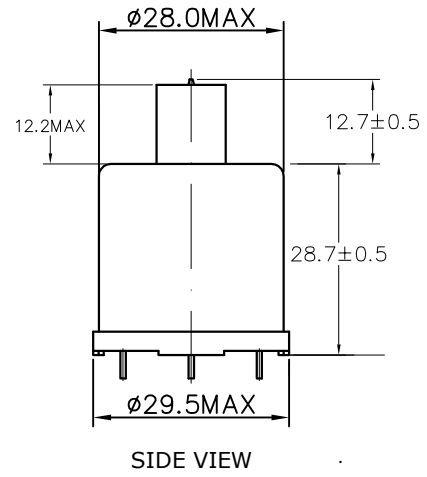
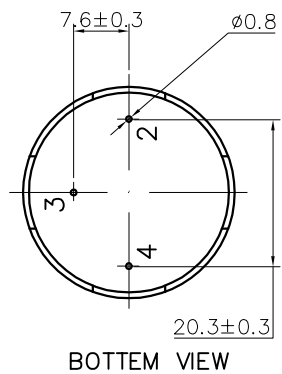
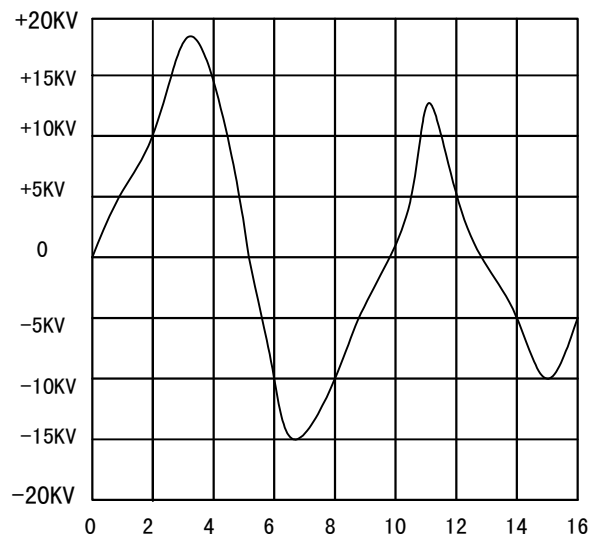


(Mark)	(Qty.)	(EC Content)	(EC Reason)	(EC No.)	(Date)	(Proposer)
△						
△						
△						



When the test voltage is 220V 50Hz, such as FIG.2 voltage and pulse width.



TYPICAL WAVEFORM AT THE H.V. POINT WITH PULSE WIDTH IN THE TRANSFORMER INTO A 20PF LOAD

FIG.2

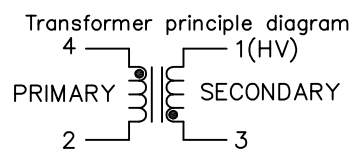
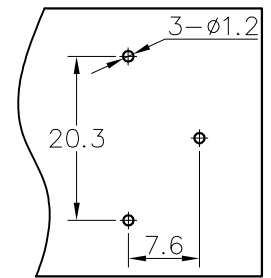


FIG. 3



NOTES:

- 1.PRIMARY: 18± 1/2 TURN 1UEW-0.45;
- 2.SECONDARY: 3420 TURN 1UEW-0.06;
- 3.HYPOT 1250VAC. BETWEEN PRIMARY AND SECONDARY;
- 4.THE USE OF TEMPERATURE - 40~85 ° C;
- 5.FILL MATERIAL: EPOXY,VACUUM FORMED;
- 6.PEAK PRIMARY CURRENT: 60 AMPS;
- 7.ADDITIONAL ELECTRICAL SPEC'S.(FOR REF.ONLY)
PRIMARY: 0.06 OHMS ± 30%,12uH ± 15%;
SECONDARY:1150 OHMS ± 30%, 340mH ± 15%;
MEASURED AT 1KHz,75° F
- 8.SPARK VOLTAGE: >18KV(CL=20PF);
DISCHARGE PULSE:5 ± 2us;
- 9.OUTPUT TERMINAL BY TENSION TEST,
DRAWING FORCE GREATER THAN 3kgf.cm;
- 10.OUTPUT TERMINAL WITH A TORSION TESTER,TORQUE GREATER THAN 8kgf.cm.

TEST CIRCUIT FOR REFERENCE ONLY

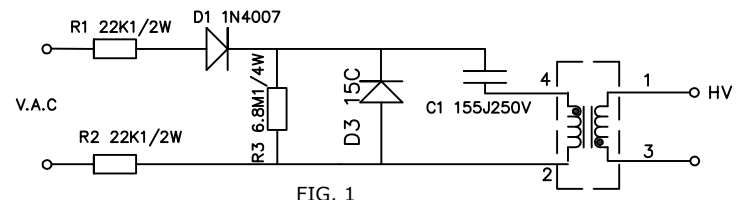


FIG. 1

NOTES: AB points between the trigger voltage is 150V

MAP	A4	PAGE	1	FIRST CORNER		PRODUCT	4010-081	
UNIT	mm	SCALE	1:1			MATERIAL NO.	GEHT081	
GEI Inc. www.gei-inc.com						DRAWING NO.	4.010.081	
						DRAWING NAME	Finished product	
						DRAWING NO.	PDS-HT-005	1.1