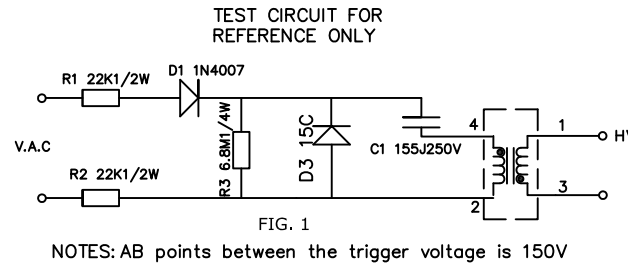
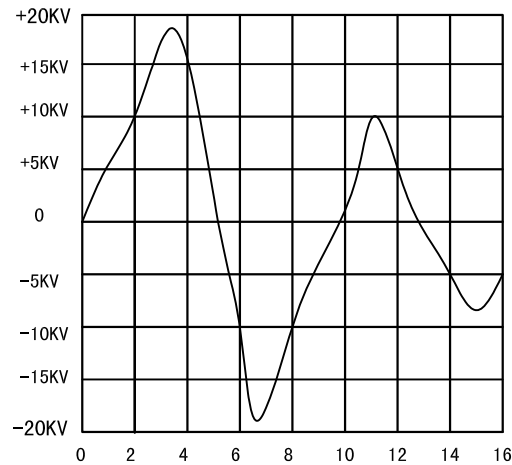


标签位置: 次级针脚正上方



When the test voltage is 220V 50Hz, such as FIG.2 voltage and pulse width.



TYPICAL WAVEFORM AT THE H.V. POINT WITH PULSE WIDTH IN THE TRANSFORMER INTO A 20PF LOAD

FIG. 2

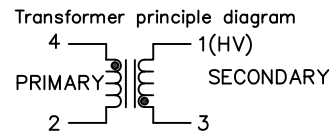


FIG. 3

NOTES:

注释:

- PRIMARY: 23± 1/2 TURN 1UEW-0.45;  
初级: 23 ± 1/2圈 1UEW-0.45;
- SECONDARY: 3900 TURN 1UEW-0.057;  
次级: 3900圈 1UEW-0.057;
- HYPOT 1250VAC. BETWEEN PRIMARY AND SECONDARY;  
初次级之间的耐压1250VAC;
- THE USE OF TEMPERATURE - 40~85 ° C;  
使用温度-40~85° C;
- FILL MATERIAL: EPOXY,VACUUM FORMED;  
填充材料: 环氧树脂, 真空形成;
- PEAK PRIMARY CURRENT: 60 AMPS;  
峰值电流: 60安培;
- ADDITIONAL ELECTRICAL SPEC'S.(FOR REF.ONLY)  
PRIMARY: 0.076 OHMS ± 20%,18uH ± 15%;  
SECONDARY:1300 OHMS ± 20%, 470mH± 15%;  
MEASURED AT 1KHz,75° F  
电气测试参数(参考)  
初级: 0.076Ω ± 20%, 18uH ± 15%;  
次级: 1300Ω ± 20%, 470mH ± 15%;  
测量在1 kHz, 75° F
- SPARK VOLTAGE: >18KV(CL=20PF);DISCHARGE PULSE:5± 2us;  
输出高压: >18KV(CL=20PF);放电脉宽: 5± 2us;
- INSULATION RESISTANCE >100M OHMS;  
绝缘电阻>100MΩ
- OUTPUT TERMINAL BY TENSION TEST, DRAWING FORCE GREATER THAN 3kgf.cm;  
高压输出端子用拉力仪测试, 拉拔力应大于3kgf. cm;
- OUTPUT TERMINAL WITH A TORSION TESTER,TORQUE GREATER THAN 8kgf.cm.  
高压输出端子用扭力仪测试, 扭力应大于8kgf. cm

产品 PRODUCT	HT	规格名称 STANDARD&NAME	1010-022A	物料编码 Material No	1.010.022A	文件名称 DRAWING NAME	成品规格书		
		材质 MATERIAL	厚度 THICKNESS	完成 FINISH	单位 UNIT	比例 SCALE	文件编号 DRAWING NO.	PDS-HT-001	
				2010.07.21	mm		页数 PAGE	1	版本 VERSIONS
									1.0
		承认 APPROVE		检图 CHECK		设计 DESIGN	GEI Inc.		
		年月日 DATE		订正记事 REVISE			www.gei-inc.com		